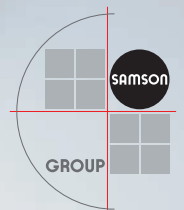


TROVIS 6600 Automation System

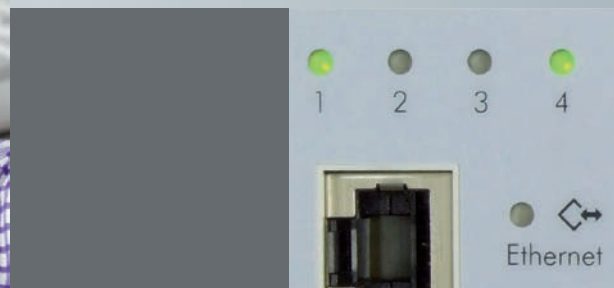
for industrial processes



Graphical Project Management Tool



- Max. 40 characters for data point names
- Function blocks (temperature control circuits, autoclave loops, analog programmer, PID algorithms etc.)
- Display of active states in the wiring
- Assignment lists for the construction of control cabinets
- Complex copy functions
- Customized libraries
- Illustration of hardware and software models
- Integration of Modbus-enabled SAMSON industrial controllers



TROVIS 6600 Automation System

High level of flexibility

TROVIS 6600 can be scaled to meet all requirements, ranging from small systems with 40 physical data points to buildings with over 20,000 data points.

Packed with functions

Remote dial-up over GSM services, 100 Mbit/s Ethernet, historical data logging, alarms and web functions are all on board.

Remote control

Users can operate their systems over ISDN, GSM or Internet as if they were on site.

TROVIS 6610 CPU Module



- Linux operating system
- 20 universal inputs
- 12 binary outputs
- 8 analog outputs
- Graphical web server
- E-mail function
- Text messaging function
- Logging of historical data (over 150,000 data points)

TROVIS 6620 I/O Module TROVIS 6625 Input Module



TROVIS 6620 I/O Module

- 10 universal inputs
- 6 binary outputs
- 4 analog outputs

TROVIS 6625 Input Module

- 20 binary inputs powered externally

TROVIS 6630 AO Module TROVIS 6640 AI Module



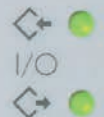
TROVIS 6630 AO Module

- 8 analog outputs for either current or voltage signals

TROVIS 6640 AI Module

- 8 analog inputs for either current, voltage, resistance signals or transmitter supply
- Pt 100(0) two-wire or three-wire circuit

5 6 7 8 9 10 11 12 13 14 15 16 17 18 19 20





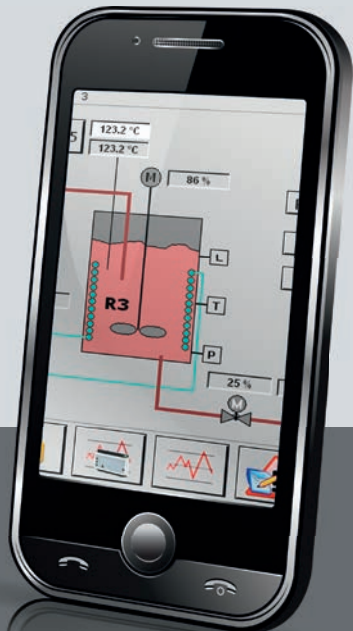
TROVIS 6616 Web Terminal



- Touch screen
- 7" TFT color display
- 800 x 480 pixel resolution
- Ethernet interface (100 Mbit)
- USB port
- Panel mounting

Web visualization

- Touch screen provides convenient operation
- Operation using graphical plant schemes
- Schemes saved in CPU module
- Data provided as Java applets by the web server in the CPU module
- No additional license fees
- Automatic list of alarms in plain text
- Color trend graphics of data saved in the CPU module
- Trend data can be saved on a USB stick
- Multi-level access protection
- Several web terminals per CPU module
- Several CPU modules per web terminal



Solutions for the Future



The SAMSON GROUP provides technically and economically viable solutions for process automation that comprise innovative products and an extensive range of services to meet customer requirements. Security of investment, energy saving and cost-effectiveness are decisive factors that are taken into account.

A great number of tasks in process automation can be optimally solved by the TROVIS 6600 Automation System. Its modular and compact design allows it to respond quickly and flexibly to new requirements.

SCADA software and the TROVIS 6616 Web Terminal enable local operation. The touch screen provides operators with an overview of the whole system with alarms visible at a glance. Users can change parameters, perform

manual override operations and read historical data.

Our solutions highlight the expertise we have gained over decades in the field of process automation, ranging from simple control loops to customized control systems. Applications in all areas of process automation are covered, for instance in the production of plant extracts for pharmaceutical products and cosmetics or in food sterilization.

The entire system technology is developed, manufactured, and tested at our headquarters in Frankfurt am Main, Germany. In this way, solutions are developed in close cooperation with customers, allowing their requirements to be implemented quickly.

TROVIS 6600 stands for proven quality made in Germany.

SAMSOMATIC GMBH, a member of the SAMSON GROUP, supplies modern, turnkey system solutions for all areas of building automation and district heating supply.

Services range from consultation, planning, system integration, production and commissioning to validation of entire systems.



SAMSON Subsidiaries Worldwide

More agencies in Africa, Asia, Europe and South America
All addresses, including e-mail and Internet addresses, can
be found at www.samson.de

Argentina (AR)
Phone: +54 2320 550-326
E-mail: valtrolsamson@valtrolsamson.com.ar

Australia (AU)
Phone: +61 2 93167800
E-mail: sales@samsoncontrols.com.au

Austria (AT)
Phone: +43 1 8772674-0
E-mail: office@samson.at

Belgium (BE)
Phone: +32 3 5415363
E-mail: info@samson-sanv.be

Brazil (BR)
Phone: +55 11 46178181
E-mail: info@samsoncontrol.com.br

Canada (CA)
Phone: +1 905 4740354
E-mail: admin@samsoncontrols.com

Chile (CL)
Phone: +56 2 22405100
E-mail: info@samson.cl

Denmark (DK)
Phone: +45 45819301
E-mail: adm@samsonreguleringsteknik.dk

Egypt, Middle East (EG)
Phone: +20 2 28643050
E-mail: info@samsoncontrols.com.eg

Finland (FI)
Phone: +358 10 4207060
E-mail: samson@samson.fi

France (FR)
Phone: +33 4 72047500
E-mail: samson@samson.fr

Germany (DE)
Phone: +49 69 4009-0
E-mail: samson@samson.de

Great Britain (GB)
Phone: +44 1737 766391
E-mail: sales@samsoncontrols.co.uk

Hungary (HU)
Phone: +36 1 231-8080
E-mail: info@samson.hu

India (IN)
Phone: +91 2138 665600
E-mail: info@samsoncontrols.net

Indonesia (ID)
Phone: +62 816 142 5569
E-mail: jossi@samson-sea.com

Italy (IT)
Phone: +39 02 33911159
E-mail: info@samson.it

Japan (JP)
Phone: +81 44 988-3931
E-mail: sales@samsonkk.co.jp

Korea (South) (KR)
Phone: +82 31 4190464
E-mail: sales@samsonkorea.kr

Malaysia (MY)
Phone: +60 3 80216698
E-mail: enquiry@samson-mal.com.my

Mexico (MX)
Phone: +52 728 2852001
E-mail: samson@samson.com.mx

Netherlands (NL)
Phone: +31 79 3610501
E-mail: info@samson-regeltechnik.nl

Norway (NO)
Phone: +47 35900870
E-mail: post@matek.no

People's Republic of China (CN)
Phone: +86 10 67803011
E-mail: info@samsonchina.com

Peru (PE)
Phone: +51 1 6371313
E-mail: info@samson.pe

Poland (PL)
Phone: +48 22 5739-777
E-mail: samson@samson.com.pl

Portugal (PT)
Phone: +351 269 634100
E-mail: samson@samson.pt

Republic of South Africa (ZA)
Phone: +27 21 5526088
E-mail: sales@samson-sa.com

Romania (RO)
Phone: +40 37 35501-92
E-mail: samson@samson.ro

Russian Federation (RU)
Phone: +7 495 6474545
E-mail: samson@samson.ru

Singapore (SG)
Phone: +65 67488810
E-mail: samsonsp@singnet.com.sg

Spain (ES)
Phone: +34 93 5861070
E-mail: samson@samson.es

Sweden (SE)
Phone: +46 31 939130
E-mail: info@samson.se

Switzerland (CH)
Phone: +41 44 283 6142
E-mail: vb-loerrach@samson.de

Taiwan (TW)
Phone: +886 2 8792-1230
E-mail: samson@sctw.com.tw

Thailand (TH)
Phone: +66 38 608939
E-mail: info@samson.co.th

Turkey (TR)
Phone: +90 212 6518746
E-mail: samson@samson.com.tr

Ukraine (UA)
Phone: +380 44 4905305
E-mail: samson@samsoneng.kiev.ua

United Arab Emirates (AE)
Phone: +971 4 8834933
E-mail: info@samson.ae

U.S.A. (US)
Phone: +1 281 383-3677
E-mail: samson@samson-usa.com

Vietnam (VN)
Phone: +84 839 106533
E-mail: samson-vn@samsongroup.org



SAMSON AG · MESS- UND REGELTECHNIK · Weismüllerstraße 3 · 60314 Frankfurt am Main, Germany
Phone: +49 69 4009-0 · Fax: +49 69 4009-1507 · E-mail: samson@samson.de · Internet: www.samson.de
SAMSON GROUP · www.samsongroup.net