

## Manual Valve DN 65 - 100 mm (3/4" - 4")



DN 65 - 100

### Features

- Stainless steel bonnet and hand wheel
- Non rising hand wheel with optical indicator
- Sealed bonnet
- Autoclavable
- CDSA sealing concept, see page 32
- Flexible diaphragm suspension
- Encapsulated diaphragm

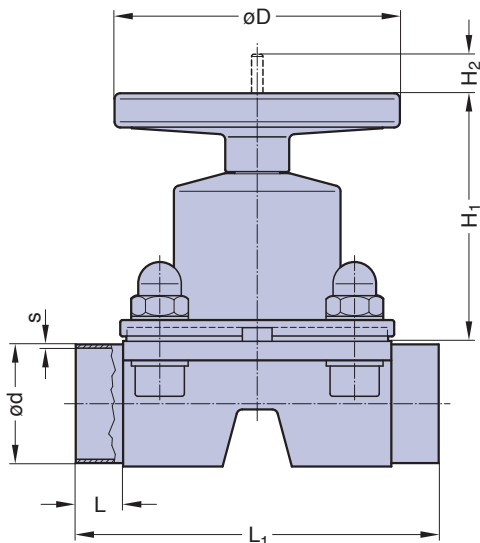
### Optional

- Adjustable internal travel stop or stroke limiter
- Sealed bonnet
- Locking device

### Technical Data

Control function: Manually operated  
 Max. working pressure: 10 bar (150 psi)  
 DN 65-100 diaphragm PTFE 8 bar (115 psi)  
 Max. working temperature: 160°C (320°F) dependent on application  
 Diaphragm material: EPDM or PTFE  
 Valve body material: Forged 1.4435/ 316L ASME/BPE  
 Investment cast 1.4435/ 316L  
 Other Alloys  
 End connection: Butt weld ends see fold out page 21  
 Clamps and flanges see page 22 to 24  
 Special ends  
 Bonnets suitable for: Two-Way bodies  
 Welded configurations  
 T- bodies  
 Multiport bodies  
 Tank bottom bodies  
 Flow rate: Kv in m<sup>3</sup>/h (Cv in GPM) see page 9  
 Diaphragm size: MA see table  
 Technical data also valid for multiport valve.

Butt weld ends  
 MA 25 - 100  
 Fold out page 21



DN 65 - 100 (Drawing MA 80)

DN (mm)	MA	Dimensions (mm)					Total weight ca. (kg)	
		L	L <sub>1</sub>	H <sub>1</sub>	H <sub>2</sub>	D	Investment cast	Forged
65	80	30	216	180	38	198	13,0	15,0
80	80	30	254	180	38	198	13,0	15,0
100	100	30	305	220	50	252	22,0	20,0

Valve type overview see page 26 and 27.  
 Ordering key see page 66 to 68.