

Manually operated Valve DN 8 - 20 mm (3/8" - 3/4")



Features

- Stainless steel bonnet and plastic hand wheel
- Manually operated diaphragm valve with plastic hand wheel is suitable for a limited number of cycles of autoclaving
- Rising hand wheel with optical indicator and stroke indicator
- Sealed bonnet
- Internal travel stop
- Locking device
- CDSA sealing concept, see page 32
- Flexible diaphragm suspension
- Encapsulated diaphragm

Optional

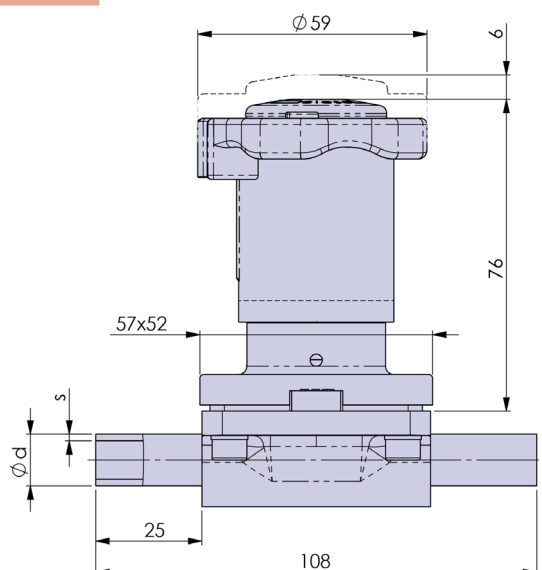
- Adjustable internal stroke limiter
- U-Lock for hand wheel
- Assembly of proximity switches

Technical Data

Control function:	Manually operated
Max. working pressure:	10 bar (150 psi)
Max. working temperature:	160°C (320°F) depending on application
Diaphragm material:	EPDM or PTFE
Body material:	Forged 1.4435/ 316L ASME/BPE Investment cast 1.4435/ 316L Other Alloys
End connection:	Butt weld ends see fold out page 21 Clamps and flanges see page 22 to 24 Special ends
Bonnets suitable for:	Two-Way bodies / Welded configurations T- bodies / Multiport bodies Tank bottom bodies
Flow rate:	Kv in m ³ /h (Cv in GPM) see page 9
Diaphragm size:	MA 10
Weight:	ca. 0,6 kg

Technical data also valid for multiport valve.

Butt weld ends
MA 10
Fold out page 21



Valve type overview see page 26 and 27.
Ordering key see page 66 to 68.